



PFRStat

Departmental Measures

August 2016

MUO



The Medical Unit Overload (MUO) plan had 2 activations in August 2016 compared to 7 activations in August 2015. The plan was activated a total of 4 times in the last quarter compared to 12 times in the same quarter one year ago.

CARES



Cardiac survival rates for the month of August 2016 were at an overall rate of 14.3% (2 cases out of 14). In August 2015 the survival rate was at 21.4% (3 cases out of 14).

Community Outreach



A total of 20 Public Education programs were offered to an audience of 1,711 in August 2016 compared to 30 programs and an audience of 1,666 in August 2015. Two CPR classes with 50 total students were taught in August 2016 compared to 1 CPR class with 9 total students in August 2015.

Transported patients were received at 13 area hospitals in August 2016.

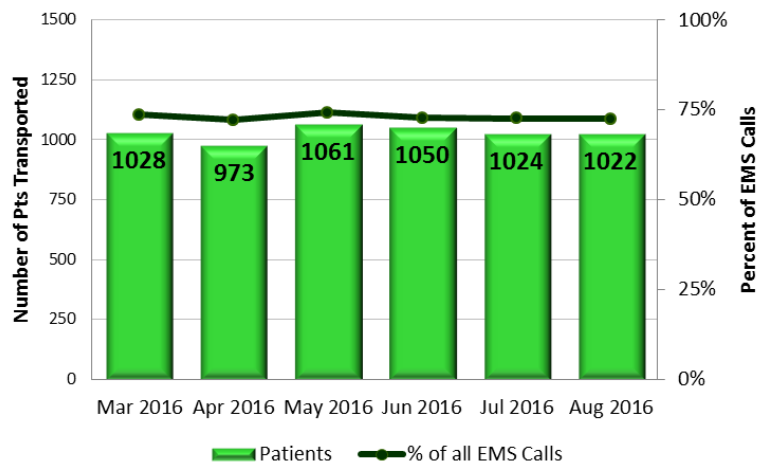
Highest Reivership:

MCP
52.15%

PHOP
20.16%

MRMC
9.39%

EMS Patient Transports

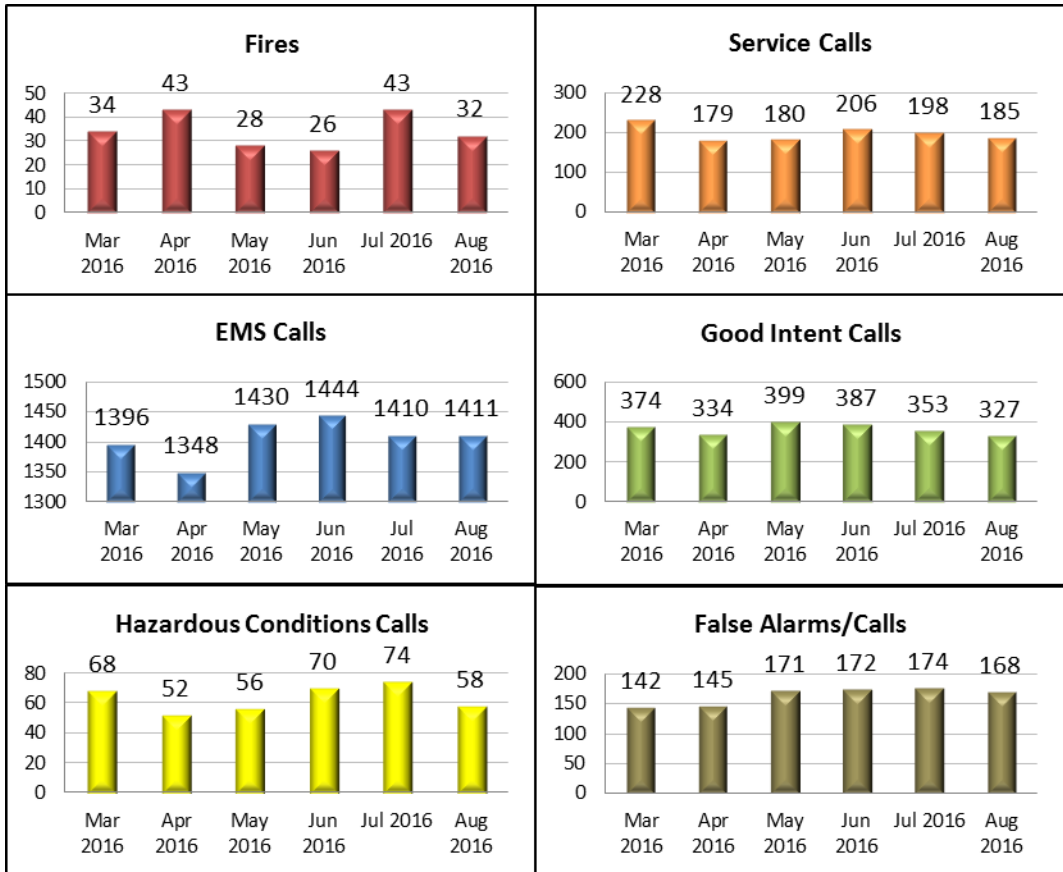




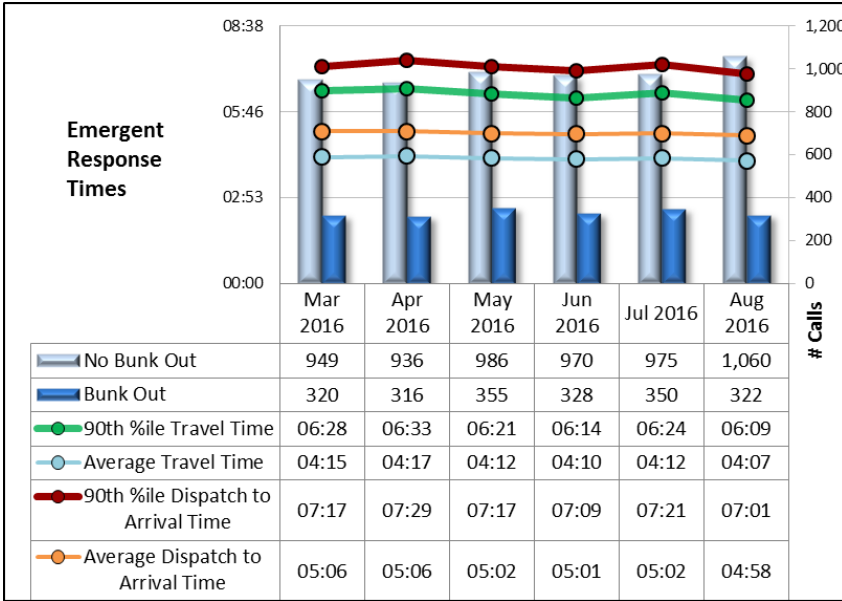
CALLS FOR SERVICE

Total Incidents for the month of August: 2,183
 Change from previous month: -3.36%
 Change from same month of previous year: +1.82%
 Variance from quarterly average: -3.06%

CALLS BY NFIRS TYPE

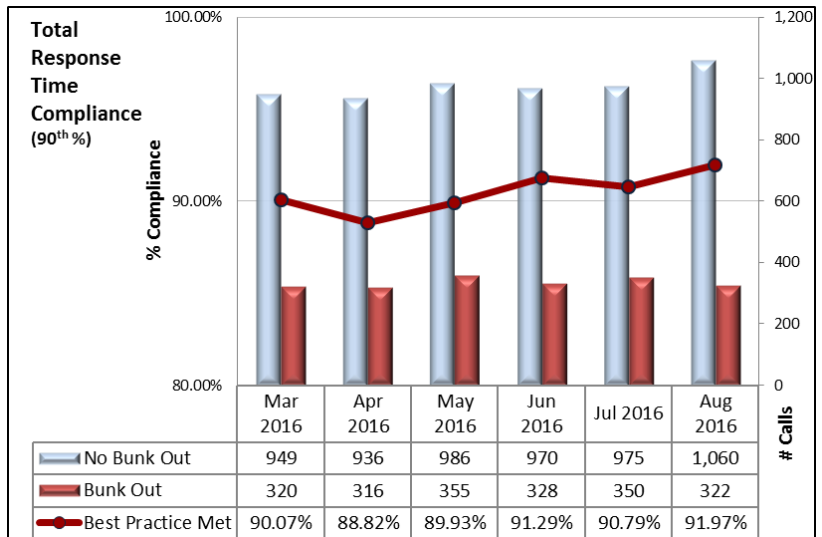


Response Time

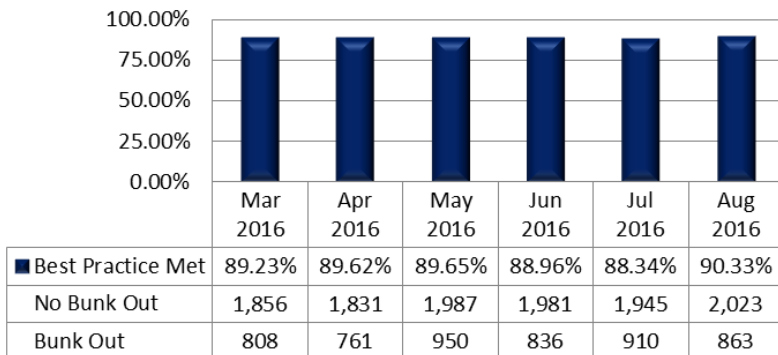


All times for response and travel decreased in August 2016 from the previous month and are the lowest times in the past 6 months.

Compliance percentages slightly increased in August 2016 and maintained at least a 90% compliance rate for the third month in a row.



Turnout Compliance



Turnout times have slightly decreased over the past month and reached the 90% compliance target for the first month in 2016

FIRE PREVENTION

August 2016 Plan Reviews

Construction: 175
Engineering: 57

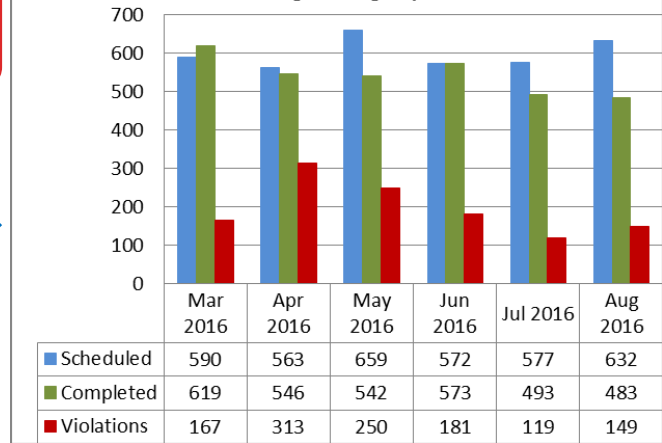
Fires with > \$10K Loss:

August 2016: 5
August 2015: 2

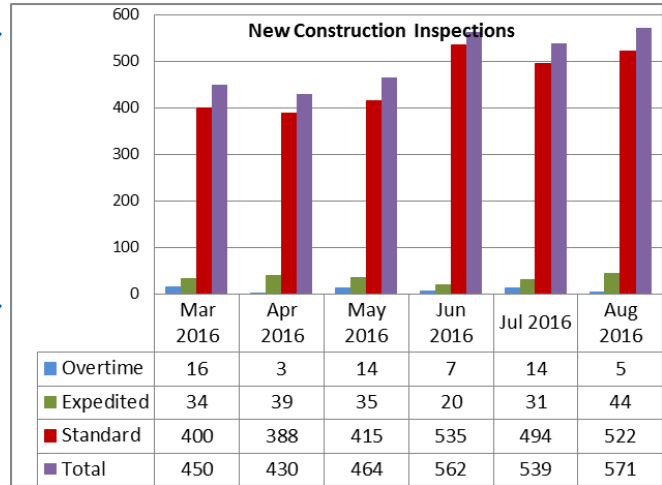
Investigations

August 2016: 1
August 2015: 8

Existing Building Inspections



New Construction Inspections



Survey Responses: June 2016

Response Time	Quality of Service	Courtesy of Personnel	Appearance of Personnel
<u>Exceeded:</u> 41 (80%)	<u>Exceeded:</u> 43 (84%)	<u>Exceeded:</u> 46 (90%)	<u>Exceeded:</u> 37 (73%)
<u>Met:</u> 10 (20%)	<u>Met:</u> 8 (16%)	<u>Met:</u> 5 (10%)	<u>Met:</u> 14 (27%)
<u>Did Not Meet:</u> 0 (0%)	<u>Did Not Meet:</u> 0 (0%)	<u>Did Not Meet:</u> 0 (0%)	<u>Did Not Meet:</u> 0 (0%)