



PFRStat



Departmental Measures

March 2014

MUO



The Medical Unit Overload (MUO) plan was activated 5 times in March 2014, *the same number of activations as March 2013*. The plan was activated a total of 15 times in the last quarter, *compared to 20 times in the same quarter one year ago*.

CARES



Cardiac survival rates for the month of February were at an overall rate of 11.1% (1 case out of 9) where the one survivor was an unwitnessed arrest, *In February 2013, the survival rate was 21.4% (3 out of 14 cases) where all 3 survivors were Utstein Bystander cases*.

Pub Ed



A total of 22 Public Education programs were offered to an audience of 746 in March 2014, *compared to 44 programs and an audience of 3,347 in March 2013*. A total of 62 programs were offered to an audience of 2,363 in the last quarter.

Transported Patients were received at 15 area hospitals in March.

Highest receivership:

MCP
57.1%

PHOP
19.4%

Baylor
10.0%

EMS Patient Transports

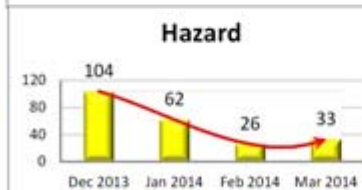
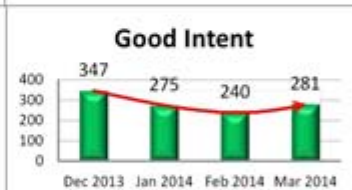
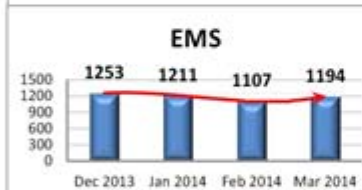
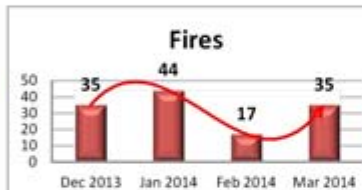




CALLS FOR SERVICE

Total Incidents for the month of March:	1,886
Change from previous month:	+13.07%
Change from same month of previous year:	+2.11%
Variance from quarterly average:	-2.81%

CALLS BY NFIRS TYPE

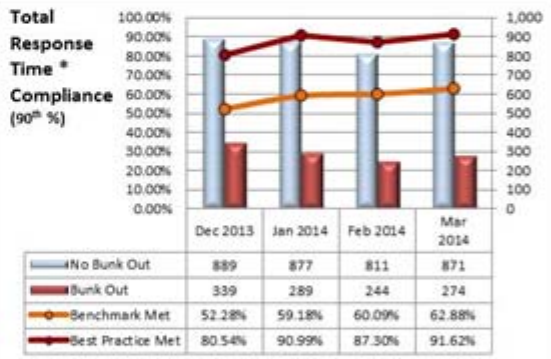


Response Time

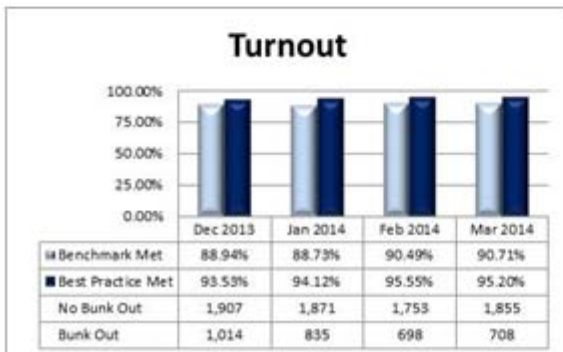


Travel and Total Response Times both dropped slightly from prior month levels, even with a slightly higher number of incidents.

Compliance with the Benchmark and Best Practice targets rose slightly, continuing a positive trend through the quarter.



Turnout compliance remained consistent with last month, with Benchmark compliance rising slightly.



Prevention Activities

New Const. Inspections

Mar 2014: 263
Quarter: 1916

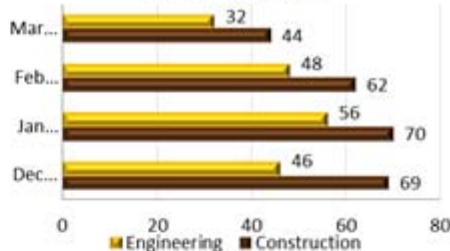
Fires with > \$10K Loss:

Mar 2014: 3
Quarter: 15

Investigations:

Mar 2014: 6
Quarter: 19

Plan Review



Existing Building Inspections



Mar 2014: 2 Sprain/Strain/Muscle Pain
(1 During PT, 1 At Incident)

Firefighter Injuries

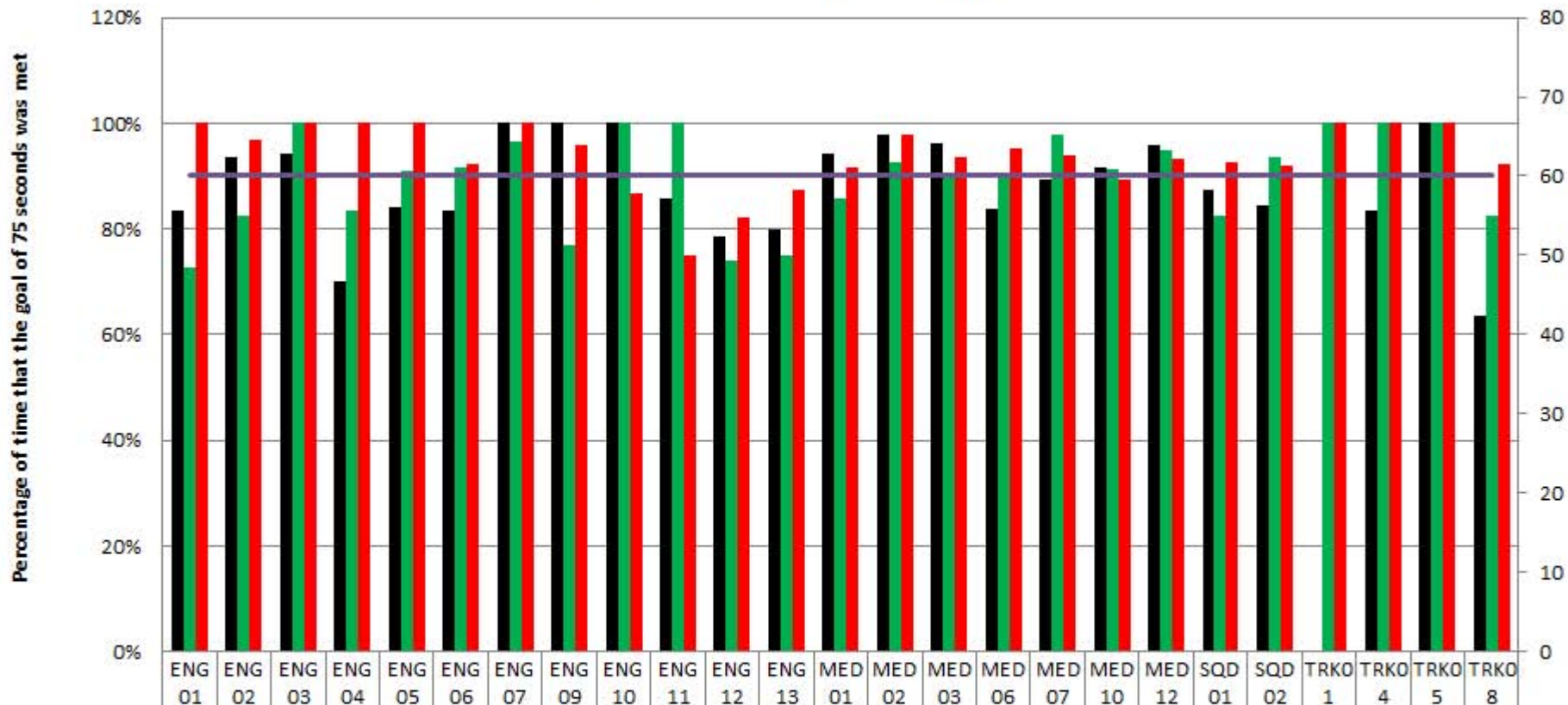


Quarter: 5 Sprain/Strain/Muscle Pain
(2 At Station, 2 At Incident, 1 During PT)
2 Wound/Cut/Bleeding/Bruise
(1 At Incident, 1 During Training)

Survey Responses

Appearance of Personnel	Courtesy of Personnel	Quality of Service	Response Time
<u>Exceeded:</u> 19 (76%)	<u>Exceeded:</u> 21 (84%)	<u>Exceeded:</u> 21 (84%)	<u>Exceeded:</u> 20 (80%)
<u>Met:</u> 6 (24%)	<u>Met:</u> 4 (16%)	<u>Met:</u> 4 (16%)	<u>Met:</u> 5 (20%)

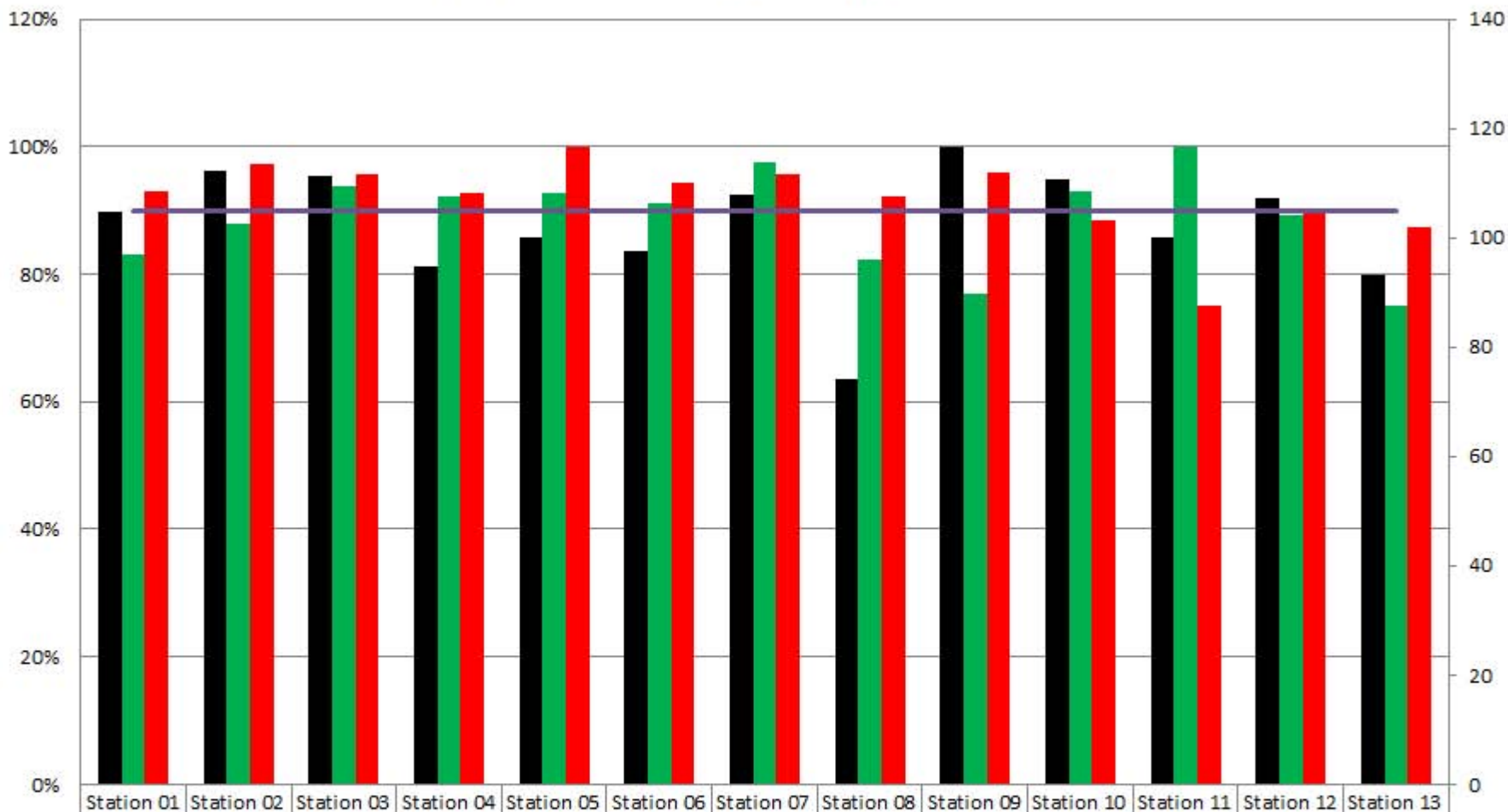
March 2014 EMS Response by Unit



A Shift	83%	94%	94%	70%	84%	83%	100%	100%	100%	86%	79%	80%	94%	98%	96%	84%	89%	92%	96%	88%	84%	0%	83%	100%	64%
B Shift	73%	83%	100%	83%	91%	92%	97%	77%	100%	100%	74%	75%	86%	93%	90%	91%	98%	91%	95%	82%	94%	100%	100%	100%	82%
C Shift	100%	97%	100%	100%	100%	92%	100%	96%	87%	75%	82%	88%	92%	98%	94%	95%	94%	89%	93%	93%	92%	100%	100%	100%	92%
Goal	90%	90%	90%	90%	90%	90%	90%	90%	90%	90%	90%	90%	90%	90%	90%	90%	90%	90%	90%	90%	90%	90%	90%	90%	90%
Count A Shift	6	32	17	10	25	24	16	11	14	7	14	5	35	46	26	43	37	24	48	48	32	0	6	3	11
Count B Shift	11	23	20	6	22	24	30	13	6	8	23	4	49	27	29	43	48	23	60	51	31	1	1	5	17
Count C Shift	12	32	16	4	26	26	25	25	15	8	28	8	48	45	31	43	67	28	59	54	37	2	1	10	13

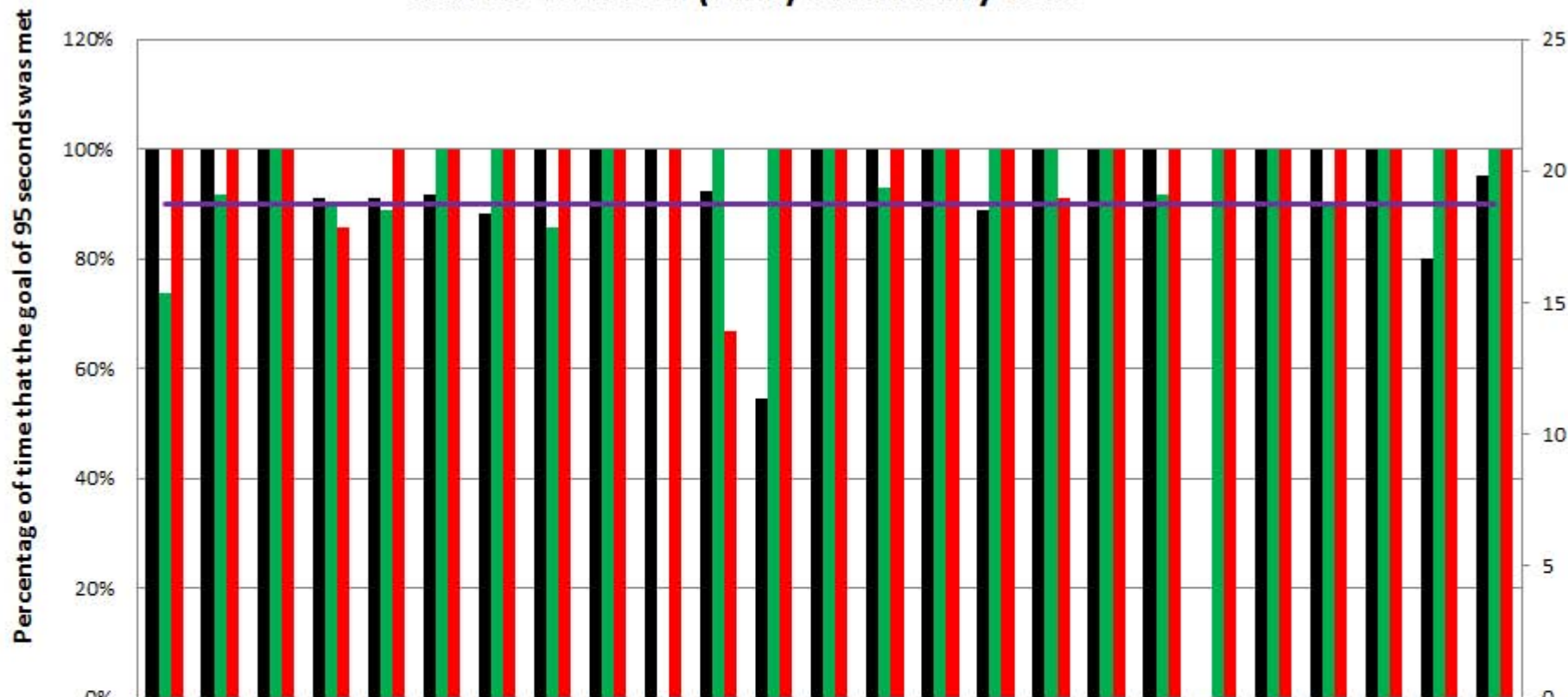
March 2014 EMS Response by Station

Percentage of time that the goal of 75 seconds was met



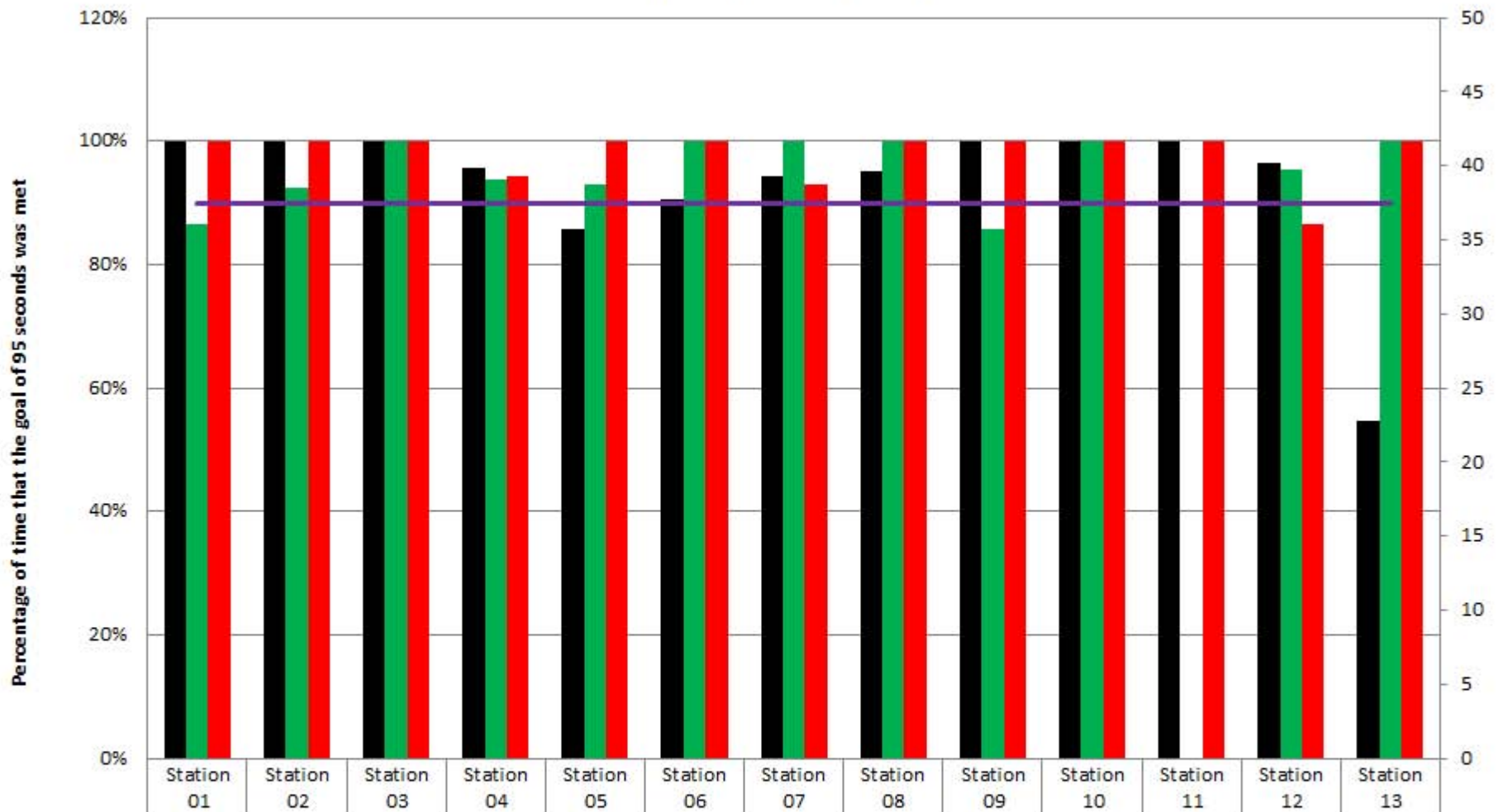
■ A Shift	90%	96%	95%	81%	86%	84%	92%	64%	100%	95%	86%	92%	80%
■ B Shift	83%	88%	94%	92%	93%	91%	97%	82%	77%	93%	100%	89%	75%
■ C Shift	93%	97%	96%	93%	100%	94%	96%	92%	96%	88%	75%	90%	88%
— Goal	90%	90%	90%	90%	90%	90%	90%	90%	90%	90%	90%	90%	90%
A Shift Count	89	78	43	48	28	67	53	11	11	38	7	62	5
B Shift Count	112	50	49	38	27	67	78	17	13	29	8	83	4
C Shift Count	116	77	47	42	36	69	92	13	25	43	8	87	8

March 2014 Fire (et al) Turnout by Unit



	ENG 01	ENG 02	ENG 03	ENG 04	ENG 05	ENG 06	ENG 07	ENG 09	ENG 10	ENG 11	ENG 12	ENG 13	MED 01	MED 02	MED 03	MED 06	MED 07	MED 10	MED 12	SQD 01	SQD 02	TRKO 1	TRKO 4	TRKO 5	TRKO 8
A Shift	100%	100%	100%	91%	91%	92%	88%	100%	100%	100%	92%	55%	100%	100%	100%	89%	100%	100%	100%	0%	100%	100%	100%	80%	95%
B Shift	74%	92%	100%	90%	89%	100%	100%	86%	100%	0%	100%	100%	100%	93%	100%	100%	100%	100%	92%	100%	100%	90%	100%	100%	100%
C Shift	100%	100%	100%	86%	100%	100%	100%	100%	100%	100%	67%	100%	100%	100%	100%	100%	91%	100%	100%	100%	100%	100%	100%	100%	100%
Goal	90%	90%	90%	90%	90%	90%	90%	90%	90%	90%	90%	90%	90%	90%	90%	90%	90%	90%	90%	90%	90%	90%	90%	90%	90%
A Shift Count	17	7	4	11	11	12	17	7	6	3	13	11	8	9	4	9	18	9	15	0	4	5	8	10	20
B Shift Count	19	12	4	10	9	12	13	7	6	0	10	5	15	14	3	10	12	9	12	1	1	10	5	5	11
C Shift Count	21	12	6	7	11	8	3	4	11	3	6	1	12	8	4	9	11	8	9	2	1	11	10	1	7

March 2014 Fire (et al) Turnout by Station



A Shift	100%	100%	100%	96%	86%	90%	94%	95%	100%	100%	100%	96%	55%
B Shift	87%	92%	100%	94%	93%	100%	100%	100%	86%	100%	0%	95%	100%
C Shift	100%	100%	100%	94%	100%	100%	93%	100%	100%	100%	100%	87%	100%
Goal	90%	90%	90%	90%	90%	90%	90%	90%	90%	90%	90%	90%	90%
A Shift Count	30	16	8	23	21	21	35	20	7	15	3	28	11
B Shift Count	45	26	7	16	14	22	25	11	7	15	0	22	5
C Shift Count	46	20	10	18	12	17	14	7	4	19	3	15	1